




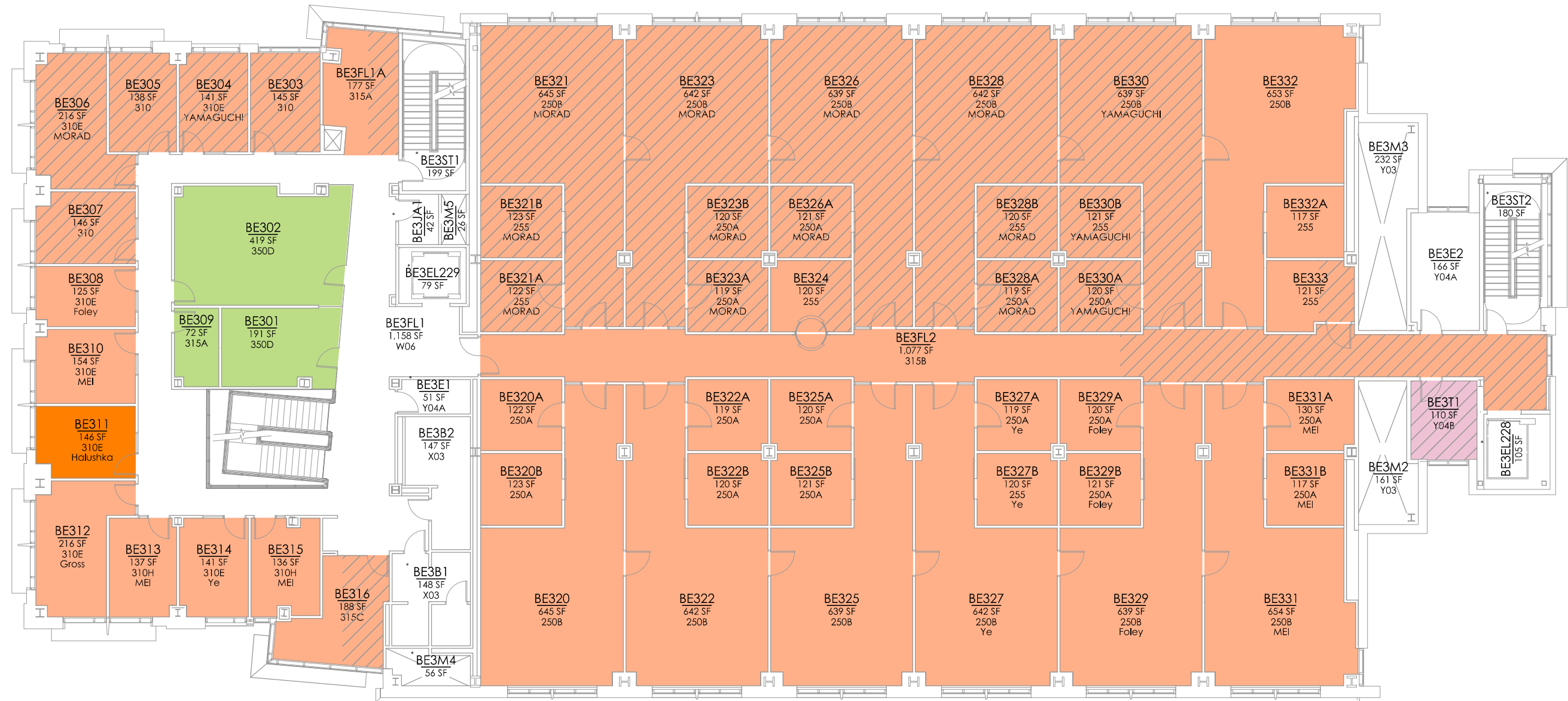


DEPARTMENT			
	1020000 - VICE PRESIDENT FOR ACADEMIC AFFAIRS	AREA 682	
	1050000 - INFORMATION TECHNOLOGY	110	
	2501000 - COLLEGE OF GRADUATE STUDIES DEAN	146	
	2850100 - CLEMSON BIOENGINEERING		AREA 8,004
	2850200 - USC REGENERATIVE MED		5,752
TOTAL:			14,694
FLOOR GROSS:			19,684



# DEPARTMENT BIOENGINEERING BUILDING